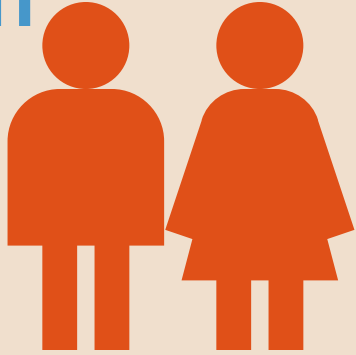


Prince George's County Labor Market Outlook.



Civilian Labor Force

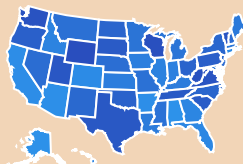


* In Terms Of People, Current Available Data As of August 4, 2021

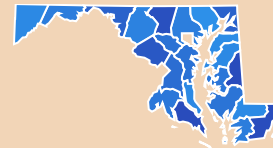
Prince George's Workforce Region	APR 2021	MAY 2021	JUN 2021
Unemployment	39,592	38,004	41,132
Employment	452,282	452,169	451,896
Labor Force	491,874	490,173	493,028

Unemployment Rates

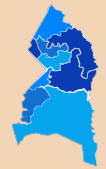
June 2021



6.1%
United States



6.7%
Maryland



8.3%
Prince George's County

This shows the monthly not seasonally adjusted Labor Force, Employment and Unemployment data for Prince George's County, MD in June, 2021.

14,052 job openings are currently available online in Prince George's County, MD as of August 4, 2021.

21,730 Job Openings were advertised online in Prince George's County, MD in June, 2021.

HIGHEST JOB OPENINGS

This section shows the industries with the highest job openings and green jobs advertised online in Prince George's County, MD as of August 4, 2021

- | | | | | | | | |
|----|--|--------------------------------------------------|-------|----|--|---------------------------------|-------|
| 1. | | Professional, Scientific, and Technical Services | 2,251 | 3. | | Retail Trade | 1,109 |
| 2. | | Health Care and Social Assistance | 2,129 | 4. | | Accommodation and Food Services | 954 |
| | | | | 5. | | Educational Services | 854 |

Top Occupations (By Advertised Salary)

- Registered Nurses - \$68,322
- General and Operations Managers - \$67,320
- Occupational Therapists - \$59,879
- Sales Representatives, Wholesale and Manufacturing, Technical and Scientific Products - \$52,500
- Police and Sheriff's Patrol Officers - \$52,073
- Heavy and Tractor-Trailer Truck Drivers - \$45,424
- Inspectors, Testers, Sorters, Samplers, and Weighers - \$43,290
- Bookkeeping, Accounting, and Auditing Clerks - \$42,673
- Executive Secretaries and Executive Administrative Assistants - \$41,806
- First-Line Supervisors of Retail Sales Workers - \$41,262

Top Requested Certifications

- Nursing Credentials and Certifications
- American Heart Association, CPR & First Aid Certifications
- Commercial Drivers License (CDL)
- (ISC)² Certifications
- Cisco Associate Certifications
- CompTIA Certifications
- Red Hat Certifications
- GIAC Security Certifications - Cyber Defense
- Social Worker Credentials & Certifications
- Nephrology Nursing Certification Commission (NNCC)

