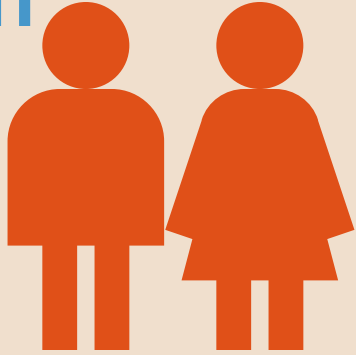


# Prince George's County Labor Market Outlook.



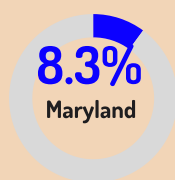
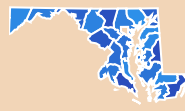
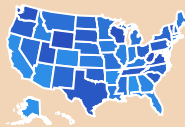
## Civilian Labor Force



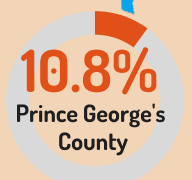
\* In Terms Of People, Current Available Data As Of July 30, 2020

Prince George's Workforce Region	MAR 2020	APR 2020	MAY 2020
Unemployment	19,178	48,216	53,862
Employment	503,225	450,872	445,892
Labor Force	522,403	499,088	499,754

## 2020 June Unemployment Rates



## 2020 May Unemployment Rates



Current Available Data As Of July 30, 2020

12,436 Current Job Openings In Prince George's County as of July 30, 2020.

15,491 Job Openings were advertised online in Prince George's County, MD in June 2020

## Top Occupations

The top five occupations with the highest number of job openings advertised online in Prince George's County as of July 30, 2020

1. Professional, Scientific, and Technical Services **1,845**
2. Accommodation and Food Services **1,539**
3. Retail Trade **1,300**
4. Health Care and Social Assistance **1,195**
5. Administrative and Support and Waste Management and Remediation Services **551**

## Top Occupations (By Advertised Salary)

1. Registered Nurses - **\$99k**
2. Teachers and Instructors - **\$78k**
3. Accountants - **\$70k**
4. Electricians - **\$65k**
5. Customer Service Representations - **\$35k**
6. Retail Salespersons - **\$31k**
7. Laborers and Freight, Stock, and Material Movers, Hand - **\$30k**
8. Packers and Packagers, Hand - **N/A**
9. Refuse and Recyclable Material Collectors - **N/A**
10. Tank Car, Truck and Ship Loaders - **N/A**

## Top Requested Certifications

1. Nursing Credentials and Certifications
2. American Heart Association, CPR & First Aid Certifications
3. (ISC)<sup>2</sup> Certifications
4. Cisco Associate Certifications
5. CompTIA Certifications
6. GIAC Security Certifications - Cyber Defense
7. Information Systems Audit & Control Association (ISACA)
8. Cisco Professional Certifications
9. American Institute of CPAs (AICPA) Certifications
10. GIAC Security Certifications - Penetration Testing

